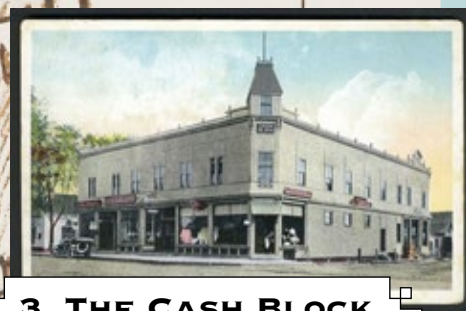




**HYANNIS
TRANSPORTATION
CENTER
YOU ARE HERE!**



1 ON JULY 8, 1854, The Cape Cod Railroad Company reached the town of Hyannis. It reached Provincetown in July 1873, and was known, by then, as the Old Colony Railroad. This postcard shows the original railroad depot in Hyannis.



3 THE CASH BLOCK building was built by Captain Alexander Baxter, often known as "the Father of Hyannis", for his commitment to developing the village in the early 19th century.



5 BUILT BEFORE 1770, by Captain Allen Hallet, this is the second oldest residence existing in Hyannis, still on its original foundation and location.



2 IN 1874, President Ulysses S. Grant arrived in Hyannis on the River Queen as part of the inauguration of the railroad extension to Provincetown. With much fanfare, he spoke to crowds at this corner and at each stop on his way to Provincetown on the Old Colony Railroad!

SCHOOL STREET Along this picturesque street you will see several Greek Revival Cottages originally built from 1825-1924. If you have a little extra time, saunter here.



6 BUILT IN 1852, Captain Allen Crowell Homestead, remains a fine original example of the Greek Revival style of architecture. Captain Crowell (1821-1891) was well known for sailing all of the Seven Seas! Visit the Barn/Stable to see the exhibit, "Across the Seven Seas."



20 IN 1666, this area of land was granted to the first settler of Hyannis, Nicholas Davis, by the leader of the Mattakeese Indians, Yanno, also called Iyannough. The name Hyannis is derived from the name of this Wamponoag Sachem.

The BRICK PATH to the HARBOR starts here!

19 CAR FERRY



18 CAPE COD MARITIME MUSEUM, celebrating Cape Cod's maritime past, present & future! \$1 off admission with this Map!

15 BUILT CIRCA 1690, this is the oldest structure located in Hyannis. It was built by Edward Coleman Jr. on Lewis Bay, south of here, and later moved to this location.

LOOK AT ALL OF THE SEA CAPTAINS THAT LIVED ON PLEASANT STREET!

1. Hyannis Transportation Center
2. President Ulyssus S. Grant spoke here!
3. Cash Block & Patriot Press
4. CAPTAIN Rodman Hallett House, 1842
5. CAPTAIN Allen Hallet Home, 1770
6. CAPTAIN Allen Crowell, Home & Stable, 1852
7. CAPTAIN Peter Norris Home, 1832
8. CAPTAIN W. Bearse, 1830-1835
9. CAPTAIN Nelson Kelly, 1842
10. Constructed as Methodist Meeting House
11. Joseph C. Linnell, 1840
12. CAPTAIN Timothy Baker, 1843
13. Lemual Holway House, 1825
14. CAPTAIN Edward Coleman Jr., 1690
15. CAPTAIN Eleazer Baker, 1884
16. Joshua Baker and Edward Bacon, 1878
17. Orin H. Crowell House, 1792
18. Maritime Museum
19. Nantucket Car Ferry
20. First Settlement
21. Hy-Line Ferry

HY-LINE FERRY

HYANNIS HARBOR

21

Did you Know?

FUN FACTS TO PONDER
ON YOUR STROLL

In 1987, the Pleasant Street and School Street neighborhood was listed on the National Register of Historic Places for its rich collection of Greek Revival cottages.



In the summer of 1854, the railroad tracks for the Old Colony Railroad were extended a mile and a half from Main Street to South Hyannis shore, to a stone wharf where the steamer Nebraska could take the rail passengers to Nantucket. The rail ran until 1872. Old Colony Road marks the path of the original tracks.



Let's not forget the Women of the Sea! Many, like Emily Baker Crocker, sailed as well, while calling Pleasant Street home. Sylvia Baxter Crowell Allen, sailed around the world six times on her family's ships!

LOG GIVING NAMES OF SEA CAPTAINS		
1. Adams, George C. S.M.	24. Barry, Joseph S. C. S.M.	47. McCall, James C.
2. Adams, George S.	25. Barry, Thomas S. C.	48. McCall, James S.M.
3. Adams, George S.	26. Barry, Thomas S. C.	49. McCall, James S.M.
4. Adams, George S. C. S.	27. Barry, Thomas S. C.	50. McCall, James S.M.
5. Adams, George S. C. S.	28. Barry, Thomas S. C.	51. McCall, James S.M.
6. Adams, George S. C. S.	29. Barry, Thomas S. C.	52. McCall, James S.M.
7. Adams, George S. C. S.	30. Barry, Thomas S. C.	53. McCall, James S.M.
8. Adams, George S. C. S.	31. Barry, Thomas S. C.	54. McCall, James S.M.
9. Adams, George S. C. S.	32. Barry, Thomas S. C.	55. McCall, James S.M.
10. Adams, George S. C. S.	33. Barry, Thomas S. C.	56. McCall, James S.M.
11. Adams, George S. C. S.	34. Barry, Thomas S. C.	57. McCall, James S.M.
12. Adams, George S. C. S.	35. Barry, Thomas S. C.	58. McCall, James S.M.
13. Adams, George S. C. S.	36. Barry, Thomas S. C.	59. McCall, James S.M.
14. Adams, George S. C. S.	37. Barry, Thomas S. C.	60. McCall, James S.M.
15. Adams, George S. C. S.	38. Barry, Thomas S. C.	61. McCall, James S.M.
16. Adams, George S. C. S.	39. Barry, Thomas S. C.	62. McCall, James S.M.
17. Adams, George S. C. S.	40. Barry, Thomas S. C.	63. McCall, James S.M.
18. Adams, George S. C. S.	41. Barry, Thomas S. C.	64. McCall, James S.M.
19. Adams, George S. C. S.	42. Barry, Thomas S. C.	65. McCall, James S.M.
20. Adams, George S. C. S.	43. Barry, Thomas S. C.	66. McCall, James S.M.
21. Adams, George S. C. S.	44. Barry, Thomas S. C.	67. McCall, James S.M.
22. Adams, George S. C. S.	45. Barry, Thomas S. C.	68. McCall, James S.M.
23. Adams, George S. C. S.	46. Barry, Thomas S. C.	69. McCall, James S.M.
24. Adams, George S. C. S.	47. Barry, Thomas S. C.	70. McCall, James S.M.

The River Queen, used by President Lincoln and General Grant as a floating headquarters during the Civil War, was later one of four steamers operating for the New Bedford, Martha's Vineyard, and Nantucket Steamboat Co. The River Queen brought President Grant to Hyannis 1874.



Around the mid 1800's there were more than 150 Hyannis Sea Captains. Pleasant Street was often referred to as *Sea Captain's Row*. The register above shows a Log of Hyannis Sea Captains compiled by Dr. Charles Harris in 1939.

On the Hyannis Village Green there is a Statue of Iyannough, the Wampanoag Indian Sachem, after which Hyannis is named.

Starting in 1666, Nicholas Davis, the first settled businessman in Hyannis, raised oysters in Lewis Bay. He stored them in a warehouse he built on Lewis Bay, right at the end of Pleasant Street.

Captain Allen Crowell & Captain Alan Baxter sailed on the *Cabot* & the *American Belle* in 1847, bringing grain to a famished Ireland. On his return, Baxter set the record of that time for an Atlantic crossing.

"LEAF" A TRACE CAN YOU IDENTIFY THESE SPECIES ALONG PLEASANT STREET?

Sycamore Maple

TOLERANT of wind and salt spray, this is a species of maple native to Central Europe & Southwestern Asia. *But consider - it is invasive - blocking the way for indigenous plants to grow!*



Copper Beech

NATIVE in the south of England as of 4000 BCE - *a long time ago!*



Butternut

ORIGINAL to Northeastern America, the *lemon-nuts* of this tree were harvested by Native Americans.



WELCOME TO HYANNIS!

WORD GAMES

EVEN WHEN YOU ARE ON VACATION - IT'S FUN TO LEARN A NEW WORD OR TWO!



This project is funded through a grant from
CARE for the Cape and Islands
www.careforthecapeandislands.org
Creating a Responsible Environment



**HEADED TO THE FERRY?
FOLLOW THE DOTTED PATH ON THIS MAP TO FIND SOME FUN FACTS ABOUT HYANNIS ALONG THE WAY!**

GREEK REVIVAL

An architectural movement of the late 18th and early 19th centuries, that celebrated a new found interest in Greece. It is represented in columns and pediments on the front of buildings.



THE SEVEN SEAS

- Arctic Ocean
- North Atlantic Ocean
- South Atlantic Ocean
- Indian Ocean
- North Pacific Ocean
- South Pacific Ocean
- Southern (or Antarctic) Ocean

SCHOONER

A sailing ship with two or more masts.



THANKS TO OUR OTHER SUPPORTERS!

- Cape Cod Regional Transit Authority**
www.ccrta.org
 - Hy-Line Ferry**
www.hylinecruises.com
Service for Nantucket & the Vineyard from Hyannis
 - Cape Cod Maritime Museum**
www.capecodmaritimemuseum.org
Celebrating Cape Cod's maritime past, present & future!
 - The Spaces Between**
www.spacesbetween.org
Documenting walks that connect Cape Cod.
 - Dominic Alessandra, Research**
Captain Allen Crowell House
Living History across the Seven Seas & Seven Continents
 - Mary-Ann Agresti AIA, Research & Design**
The Design Initiative, Inc | Architecture and Design
www.thedesigni.com
- Use this map to get \$1 off admission at the Cape Cod Maritime Museum



DID YOU KNOW that in the 1800's there were *over 150 Sea Captains* that called **HYANNIS** home? **WELCOME** to the beginning of a historical walk between **TRAIN & FERRY** - two modes of transport in Hyannis that have inspired the **CAPE** & her **VISITORS** for decades! Walk from the train to the ferry and delve into one of the most historic areas of **HYANNIS**.

THE SPACES BETWEEN documenting meaningful walks that connect the Cape for residents and visitors.

Find the map on-line at www.capecodmaritimemuseum.org

